

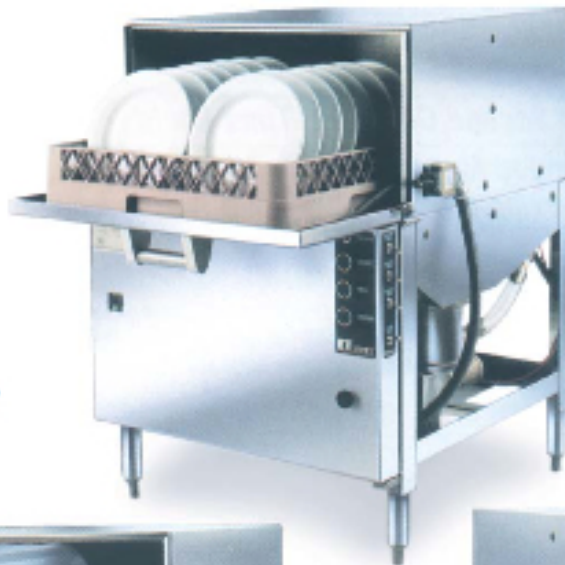


Alouette Ware Wash Chemicals Inc.

Cost Effective Cleaning Solutions for Restaurants & Bars

# ET Series by

**MULTI-USE UNDERCOUNTER DISHWASHERS**



*Perfect for Restaurants,  
Delicatessens & Fast  
Food Operations*

*An Industrial  
Design Machine  
for Commercial  
Application*

***FINALLY**, an undercounter  
that offers kitchenware results,  
in a glass washing machine*



*Process over 200 trays per hour.  
Great for small bed nursing  
homes and day care facilities*

*When space demands a small dishmachine, don't sacrifice quality or results.  
**Ask for one of the ET-AF UNDERCOUNTERS.***



# Alouette Ware Wash Chemicals Inc.

Cost Effective Cleaning Solutions for Restaurants & Bars

## ET Series

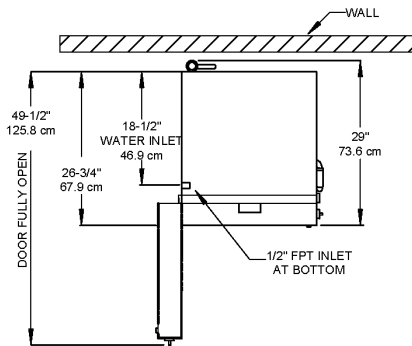
MULTI-USE UNDERCOUNTER DISHWASHERS

**ET... The Dishmachine of choice, when space is a concern. You will NEVER AGAIN have to sacrifice production or results.**

- 1 1/2 HP Wash and Rinse Pump
- Prime Switches
- Automatic Chemical Feed
- 90 Second Complete Time Cycle
- Hinged Mounted Panel for Easy Service Access



Operate a free standing complete warewashing center in only 48" of space. To do this, combine our ET-AF Undercounter with our stainless steel table package



TOP VIEW

**CAUTION:**  
Electrical and plumbing connections must be made by a qualified Service Person who will comply with all available federal, state, and local Health, Electrical, Plumbing, and Safety codes.

\*Manufacturer reserves the right to modify these specifications in compliance with regulatory agencies and manufacturing expediency.

**NOTE:**  
All dimensions listed have a tolerance of + or - 1/8" unless otherwise noted.

### ET SERIES SPECIFICATIONS

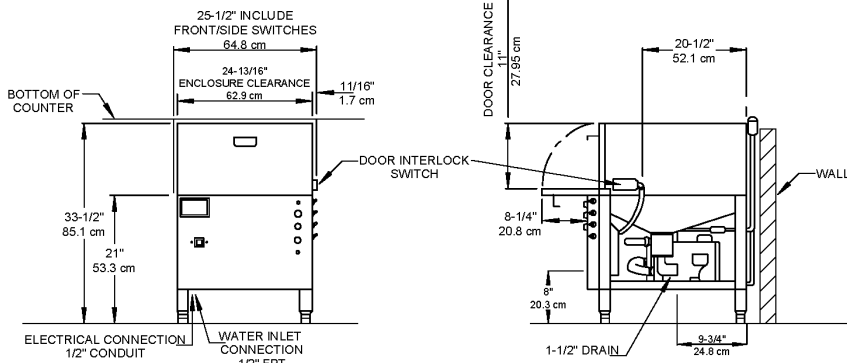
	FAMILY MODELS		
	ET-AF	ET-A	ET-AH
NSF RATED CAPACITY (Racks/Hr.)	30	24	20
WASH TIME (Sec.)	45	60	75
RINSE TIME (Sec.)	30	45	60
DWELL (Sec.)	15	15	15
TOTAL CYCLE TIME (Sec.)	90	120	150

WATER TEMPERATURE-SUPPLY WATER	(NSF) 120 F Min. 49 C Min.
WATER CONSUMPTION (NSF RATED)	1.7 Gal's Per Cycle 6.4 Lit's Per Cycle
MOTOR RATING	1.5 HP 1.125 KW
ELECTRICAL RATINGS (NEC)	115 Vac, 20amp brkr, 50/60Hz, 1Phase

Connect to Supply Source using 10-12 AWG copper wires using non-time delay fuse of 20 amp rating or 20 amp circuit breaker.

RACK SIZE	19.75" x 19.75"
DOOR CLEARANCE	50.2 cm x 50.2 cm 11" x 22.25"
WATER INLET	27.9 cm x 56.5 cm
DRAIN SIZE	1/2" FPT 1-1/2" FPT
HEIGHT OF STANDARD ET	Min 33.5"-Max 34.5"
HEIGHT OF ET-AF-3	85.1 to 87.6 cm Min 36.5"-Max 37.5"
WIDTH (Overall)	25.5"
DEPTH (Overall)	64.8 cm 29"
SHIPPING WEIGHT	73.6 cm 201 lb.
SHIPPING VOLUME (CRATED)	91.2 kg 28.6 cu. ft. .8 cu. m.

\*Also available in a 3" Taller Version with 14" x 22.25" (35.8 x 57 cm) door clearance. Model ET-AF-3



FRONT VIEW

SIDE VIEW