



Alouette Ware Wash Chemicals Inc.

Cost Effective Cleaning Solution for Restaurant & Bars

The VCF Series glasswashers provide high volume, top quality performance in a compact, single unit.

VCF - Rotary Type Fully Automatic Glasswashing Machine

New three-pump injection system:

- Injector system allows the use of separate sanitizer and rinse aid resulting in real savings.
- Precisely calibrated pumps inject just the right amount of chemical each time - no guesswork - no waste.

Upper and lower wash and rinse arms produce sparkling clean glasses every time.

Double walled construction for quieter operation.

Cool final rinse water provides a cool glass ready for immediate use.

An off-the-floor shelf provides a storage for three, 1 gallon containers.

Polypropylene Conveyor virtually eliminates chipping of fine stemware.



Valu-Clean

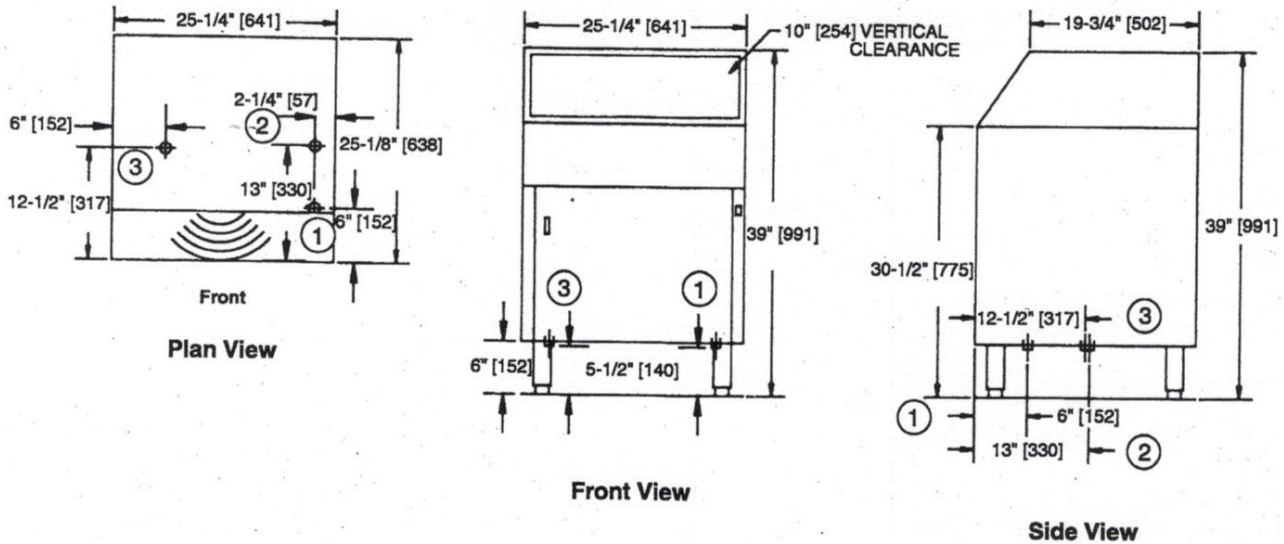




Alouette Ware Wash Chemicals Inc.

Cost Effective Cleaning Solution for Restaurant & Bars

Valu-Clean VCF (Rotary Type) Glasswashing Machine - Specification Sheet



* Dimensions shown in inches and millimeters *

Quick Facts

Capacity (Hr.)

2-1/2" (64) Glasses 1000

Water Consumption

Cold Water (Approx.) 2.8 US gpm
10.6 Liters/min
2.24 imp gpm
Hot Water (Initial Fill) 3 US gallons
11.35 liters
2.4 imp gallons

(Max use - approx. 10 US gph - 8.3 imp gph)

Temperature °F/C

Inlet Water (hot) 140-160/61-69
Inlet Water (cold) 75/24

Heating

Tank heat; electric (kw) 3

Optional Accessories

- 0707544 - Drain tray and waste collector (VCF-70A)
- 0707258 - Quick disconnect package (incl. casters)
- 0701962 - Casters; set of four - 2 locking, 2 regular
- 0702903 - Hand sink and wet waste receiver (VC46)
- 0701956 - Wash down hose

Utilities

*Electrical: 208 - 230/60/1, 15amp

1	Hot water connection: 1/2" (13) IPS Flow pressure 25-95 psi (172.5-656 kPa)
2	Cold water connection: 1/2" (13) IPS FLOW pressure 25-95 psi (172.5-656 kPa)
3	Drain connection: 1-1/2" (38) tailpiece Connect to drain size according to local plumbing code.

*Note: VCF Models supplied with 6 ft. (1829) plug in cord

Warning:

Plumbing and electrical connections should be made by qualified personnel who will observe all the applicable plumbing, sanitary and safety codes.

Due to an ongoing value analysis program at Valu-Clean, specifications in this catalog are subject to change without notice.

	Uncrated	Crated
Height*	39" (991)	46-1/2" (1181)
Width	25-1/4" (640)	27" (685)
Depth	25-1/8" (638)	27-1/2" (698)
Ship Wt. lbs/kg	156/71	176/80
*adjustable foot height - 1-1/4" (45)		